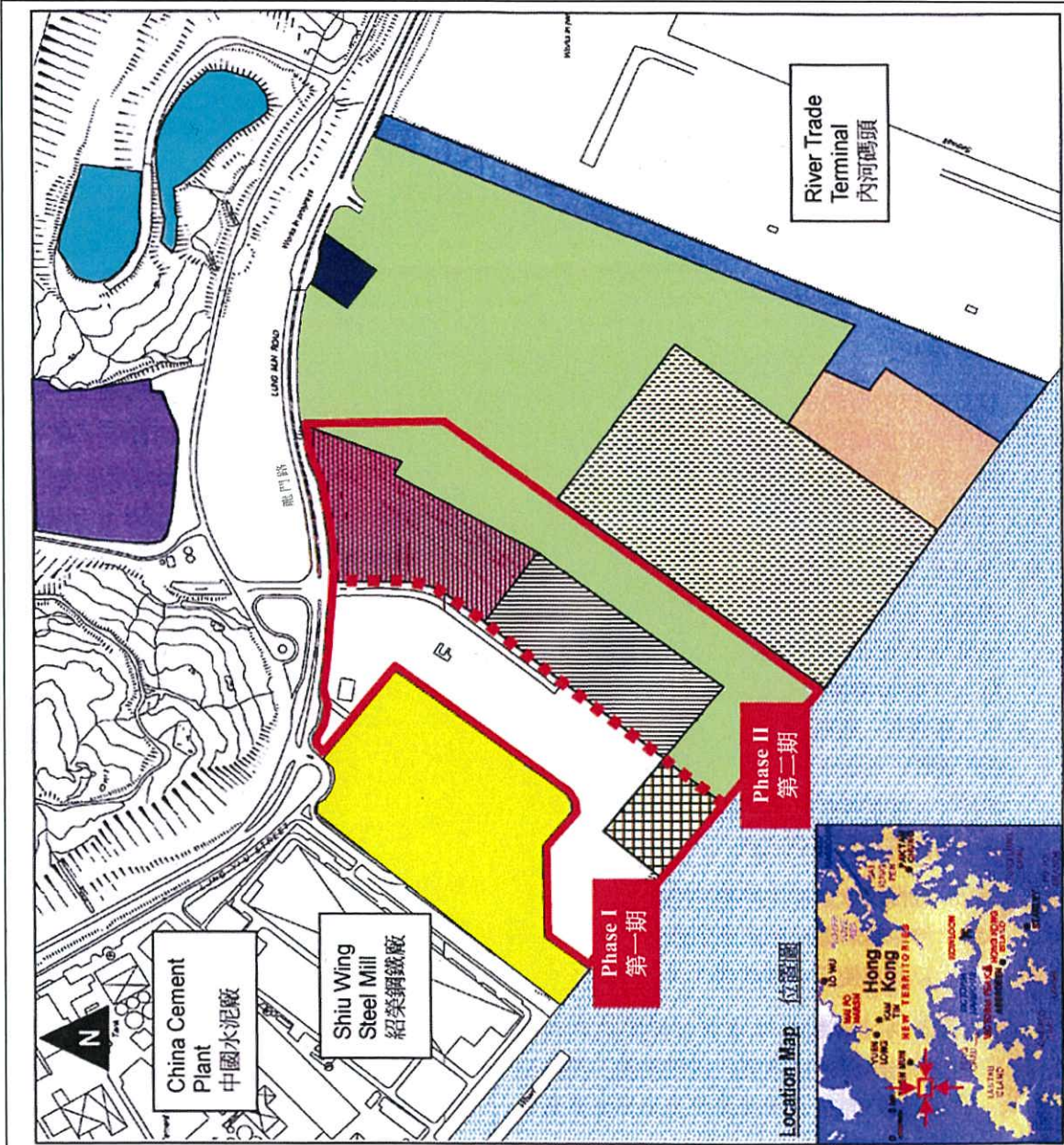


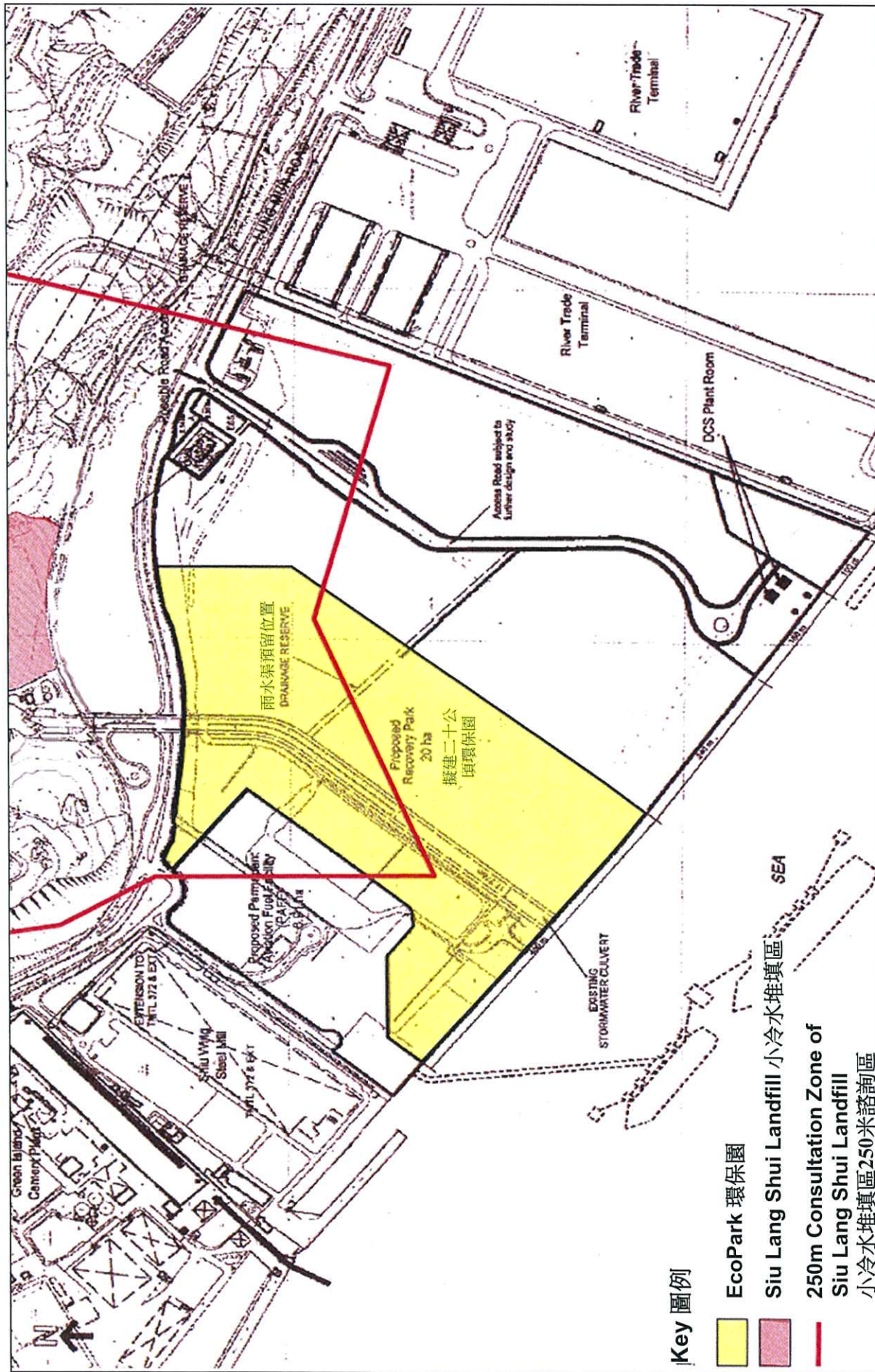
Development of an EcoPark in Tuen Mun Area 38 - Location of the EcoPark and Other Users
於屯門38區發展環保園 - 位於屯門38區的環保園及其他使用者位置圖

Note: Reproduced from Figure 2.1 of the Approved EIA Report (AEIAR-086/2005)
注意: 複製自經批准的環評報告(AEIAR-086/2005) 圖2.1



Key 圖例

- EcoPark 環保園**
- Siu Lang Shui Closed Restored Landfill (Existing) 小冷水已關閉修復堆填區 (現有)**
- Holiday Camp (Planned) 度假營地 (計劃中)**
- Permanent Aviation Fuel Facility (Planned) 永久性飛機燃料設施 (計劃中)**
- Tuen Mun Sewage Pumping Station (Existing) 屯門污水泵水站 (現有)**
- Pilot Construction & Demolition (C&D) Materials Recycling Facility (Existing) 建造及拆卸物料回收設施 (現有)**
- Crushing Facility (Planned) 壓碎設施 (計劃中)**
- Fill Bank (Existing) 填料庫 (現有)**
- 3.2ha Fill Bank Expansion (Existing) 3.2公頃填料庫擴建 (現有)**
- Tipping Hall for East Sha Chau (Existing) 沙洲東部海泥傾倒區 (現有)**
- Penny's Bay Stage 2 Sorting Facility & Barging (Existing) 竹篙灣第二期分類設施及駁船裝卸區 (現有)**
- Temporary Mixed Construction Waste Sorting Facility (Planned) 臨時混合建築廢物分類設施 (計劃中)**
- C&D Materials Handling Facilities (Indicative boundary) (Planned) 建造及拆卸物料處理設施 (參考範圍) (計劃中)**



Environmental Permit No.: EP-226/2005/D
 環境許可證編號:

Development of an EcoPark in Tuen Mun Area 38 – EcoPark and Siu Lang Shui Landfill
 於屯門38區發展環保園 – 環保園與小冷水堆填區

Note: Reproduced from Figure 8.1 of the Approved EIA Report (AEIAR-086/2005)
 注意：複製自經批准的環評報告(AEIAR-086/2005)圖8.1

Figure 2 圖 2

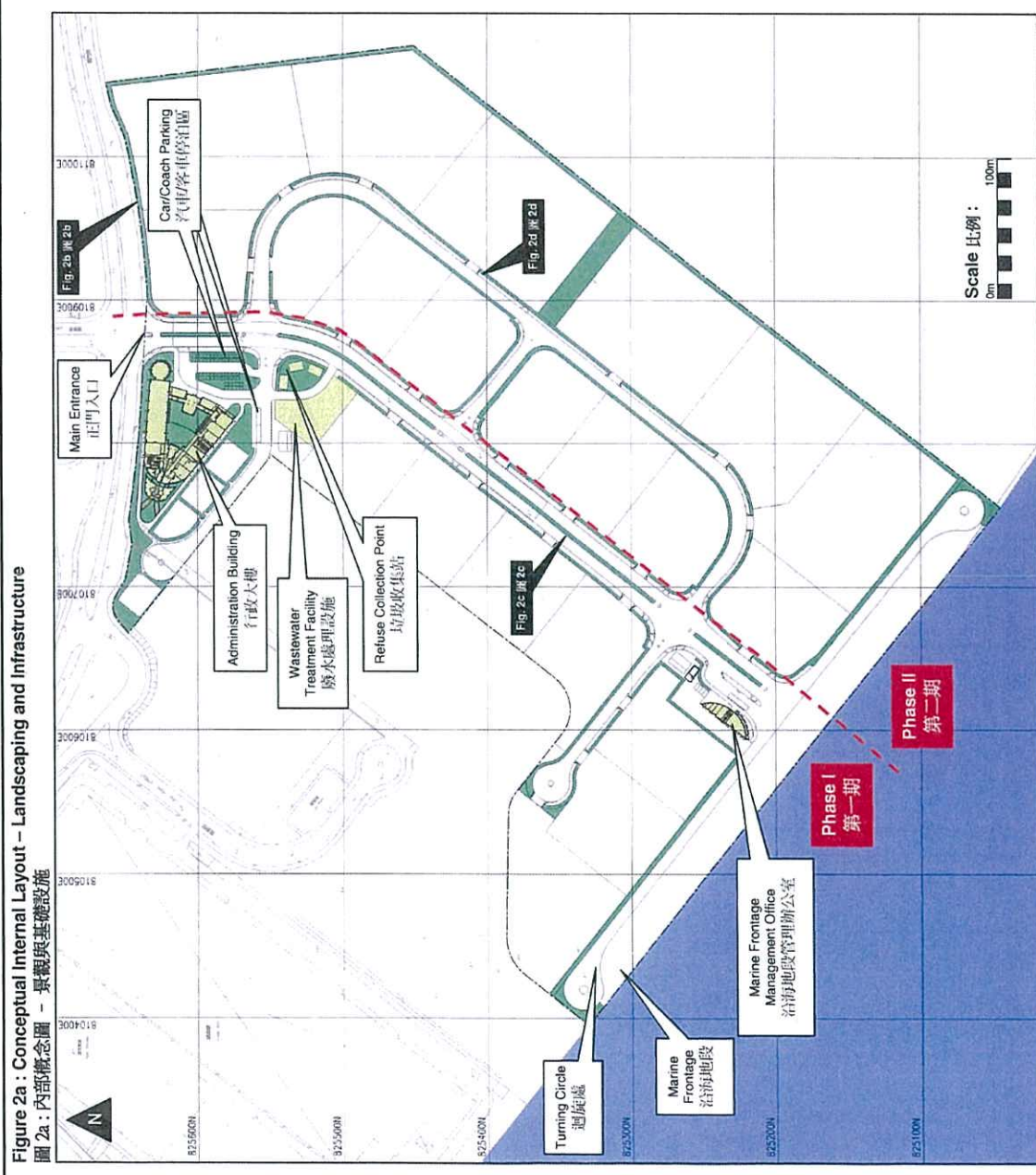


Figure 2a : Conceptual Internal Layout - Landscaping and Infrastructure
圖 2a : 內部概念圖 - 景觀與基礎設施

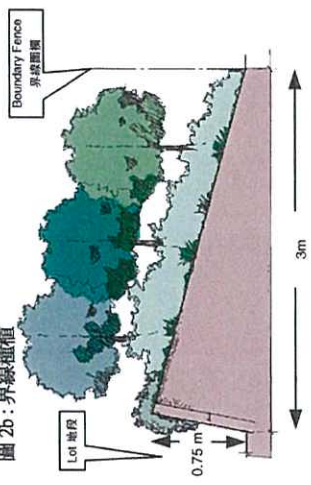


Figure 2b : Boundary Planting
圖 2b : 界線種植

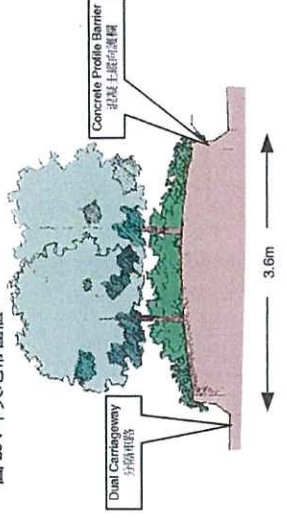


Figure 2c : Median Strip Planting
圖 2c : 中央地帶種植

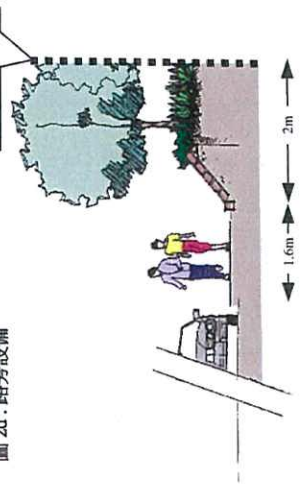


Figure 2d : Roadside Treatment
圖 2d : 路旁設備

Development of an EcoPark in Tuen Mun Area 38 - Conceptual Internal Layout - Landscaping and Infrastructure
於屯門38區發展環保園 - 內部概念圖 - 景觀與基礎設施

Note : Modified from Figures 2.3a, 2.3b, 2.3c & 2.3d of the Approved EIA Report (AEIAR-089/2005)
注意 : 修改自經批准的環評報告(AEIAR-086/2005) 圖2.3a, 2.3b, 2.3c & 2.3d



Environmental Permit No.: EP-226/2005/D
環境許可證編號:

Figure 3 圖 3

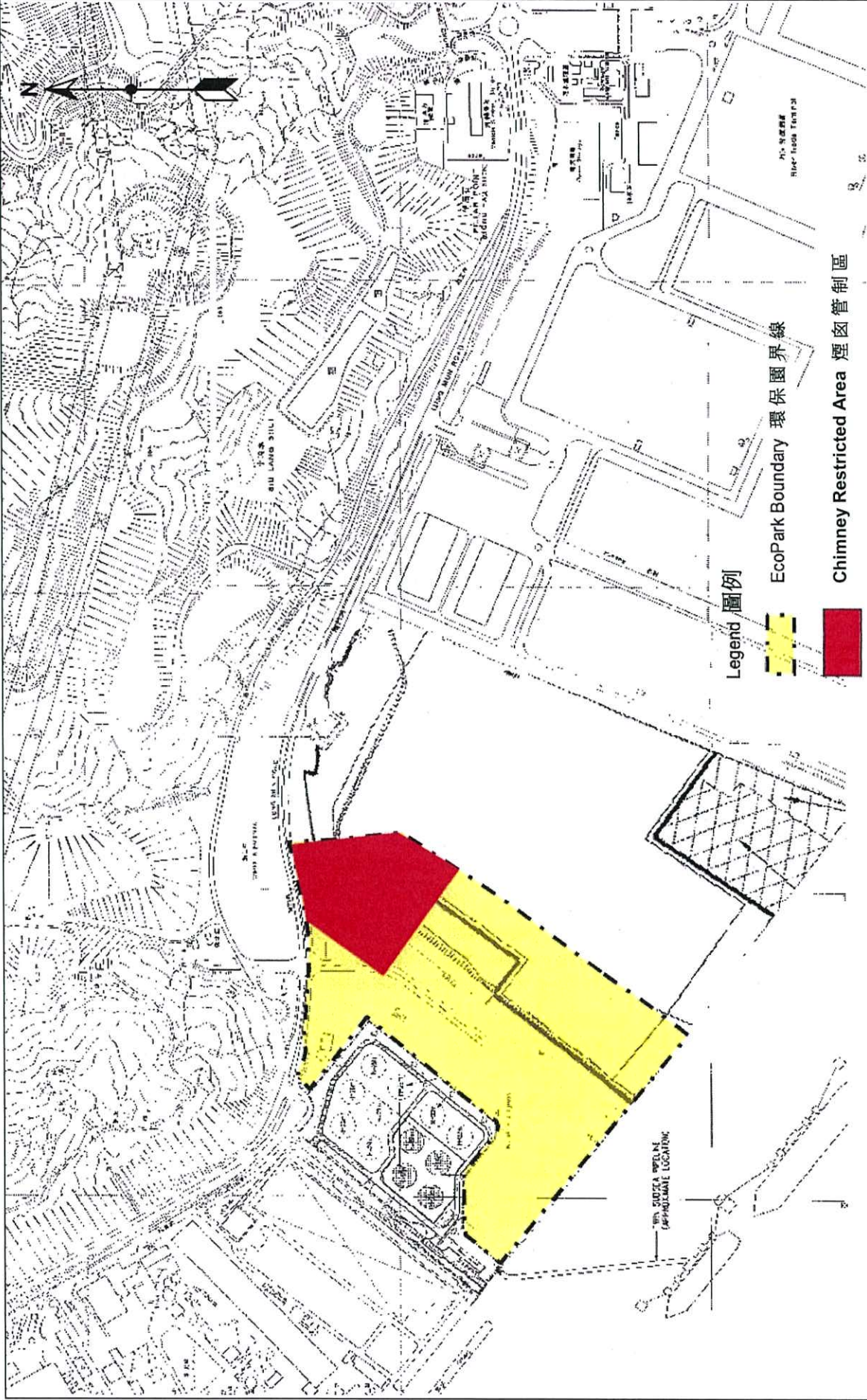


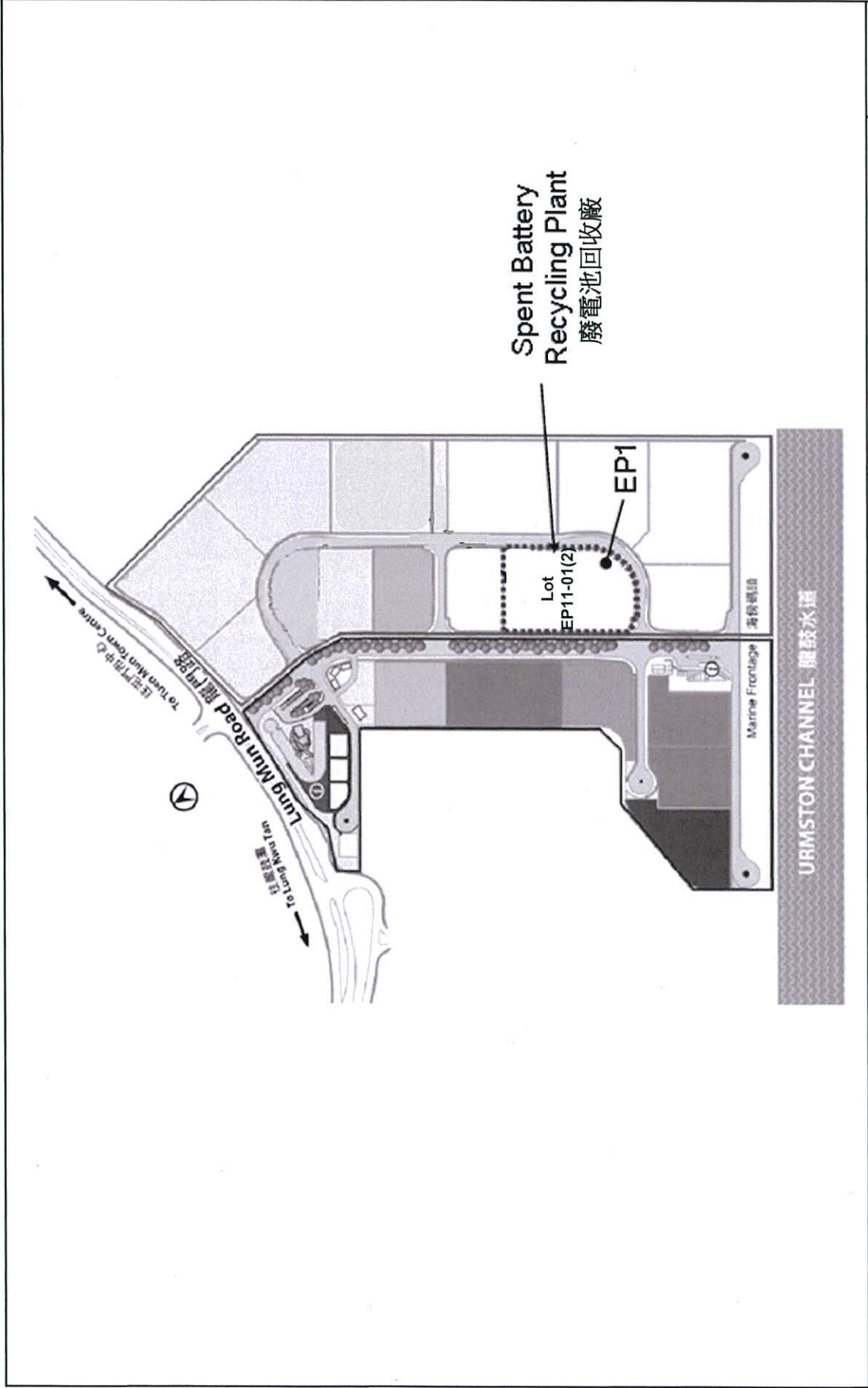
Environmental Permit No.: EP-226/2005/D
環境許可證編號:

Figure 4 圖 4

Development of an EcoPark in Tuen Mun Area 38 – Chimney Restricted Area
於屯門38區發展環保園 – 煙囪管制區

Note: Reproduced from Figure 3.3 of the Approved EIA Report (AEIAR-086/2005)
注意：複製自經批准的環評報告(AEIAR-086/2005) 圖3.3



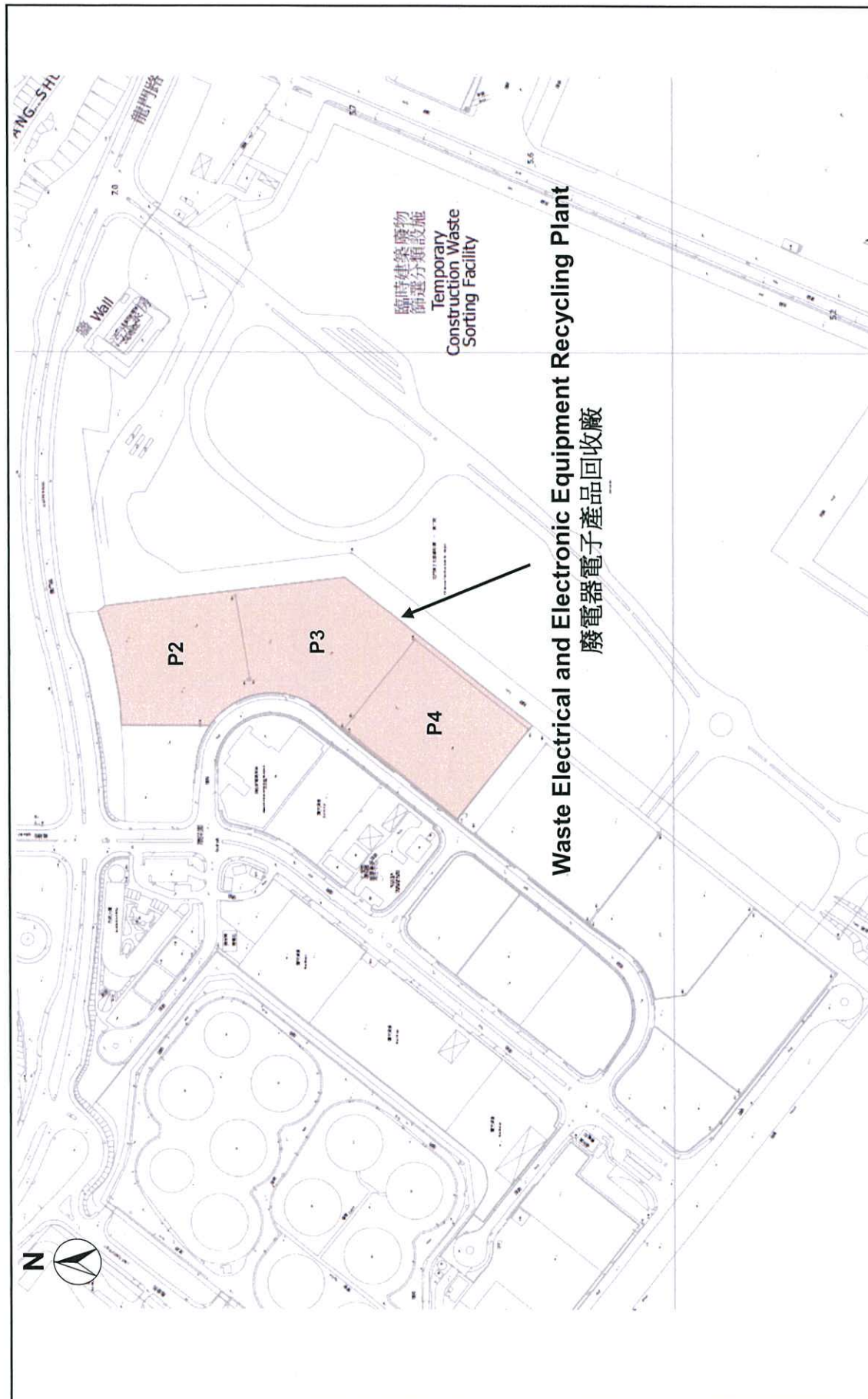


Development of an EcoPark in Tuen Mun Area 38 – Spent Battery Recycling Plant
 於屯門38區發展環保園 – 廢電池回收廠
 Note: Reproduced from application No. VEP-405/2013
 注意: 複製自申請書編號 VEP-405/2013

Environmental Permit No.: EP-226/2005/D
 環境許可證編號: EP-226/2005/D

Figure 5 圖 5





Waste Electrical and Electronic Equipment Recycling Plant
廢電器電子產品回收廠



Environmental Permit No.: EP-226/2005/D
 環境許可證編號:

Figure 6 圖 6

Development of an EcoPark in Tuen Mun Area 38 – Waste Electrical and Electronic Equipment Recycling Plant

於屯門38區發展環保園 – 廢電器電子產品回收廠

Note: Reproduced from application No. VEP-408/2013
 注意: 複製自申請書編號 VEP-408/2013